

BGI Config App

QUICK START GUIDE



Note: System test, device name, and mode changes are only allowed within the first (1) minute upon power up.

Devices +

- BG-One_Bilge1
Mode A (Marina)
- BG-One_Bilge2
Mode B (Marine Sanctuary)
- BG-Oil_Bilge3
Standard Alarm Mode
- BG-Oil_Bilge4
Latch Alarm Mode
- BG-HW_Bilge1
High Water Sensor

“+” Scan for Devices via Bluetooth

List of Devices

- Connected
- Not Connected

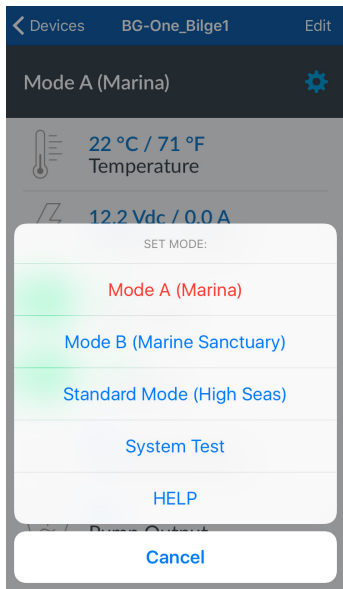
Devices BG-One_Bilge1 Edit

Mode A (Marina) ⚙️

- 25.7 °C / 78.2 °F
Temperature
- 12.1 Vdc / 0.0 A
Voltage / Current
- OK
Alarm State
- None
Oil Detect ⚙️
- Air
Detected Medium
- Off
Pump Output ⚙️

Current Active Mode (BG-One, BG-Oil)

Device Status



⚙️ **Change Active Mode (BG-One)**

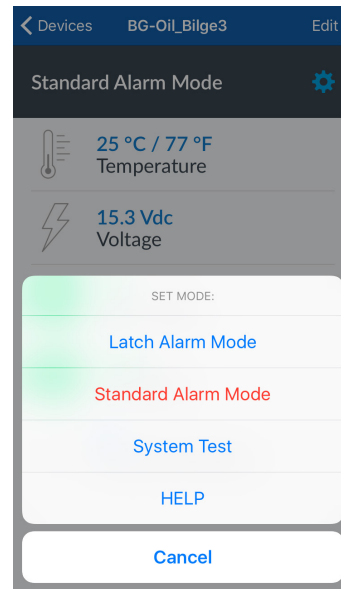
Set Mode (BG-One)

Mode A (Marina) – Turns pump ON when water is detected → Turns pump OFF when oil or fuel is detected → Turns pump back ON when only water is detected

Mode B (Marine Sanctuary) – Stays OFF until alarm and bilge is cleared (Requires power cycling of device)

Standard Mode (High Seas) – Bilge pump switch only (Will turn ON or OFF for any liquid)

System Test – Activates pump and alarm outputs for 3 seconds



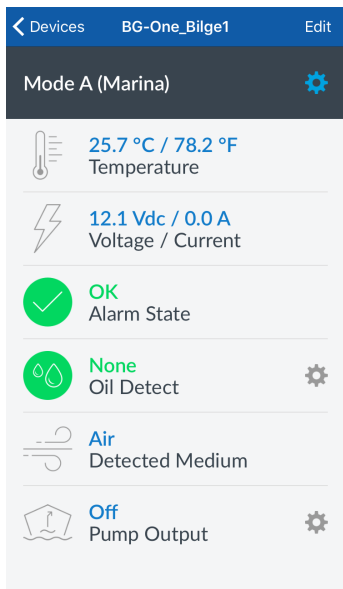
⚙️ **Change Active Mode (BG-Oil)**

Set Mode (BG-Oil)

Latch Alarm Mode – Alarm stays ON when oil is detected, until manual reset or power cycling of device

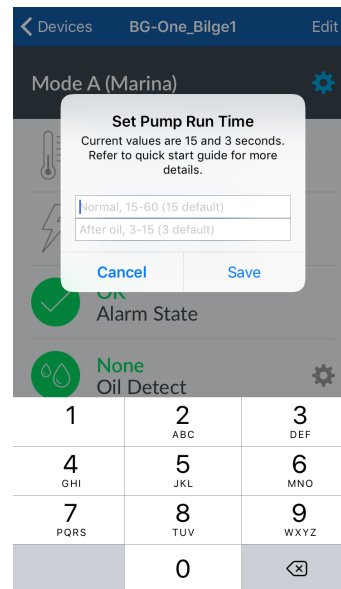
Standard Alarm Mode – Alarm turns ON when oil is detected → Alarm turns OFF when oil is no longer detected

System Test – Activates alarm output for 3 seconds



⚙️ **Set Oil Detection Sensitivity**
Low, Medium, High (BG-One, BG-Oil)

⚙️ **Set Switch Pump Run Time**
(BG-One, BG-SWA, BG-SW, BG-SP)



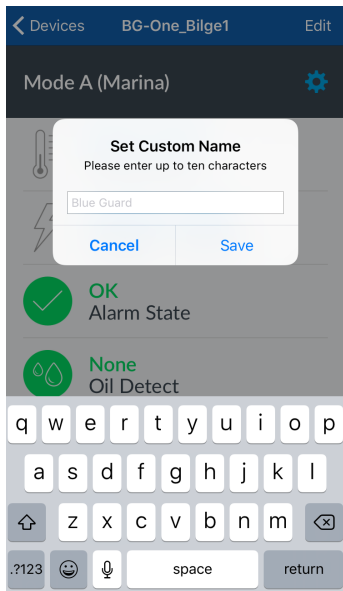
Set Switch Pump Run Time*

(BG-One, BG-SWA, BG-SW, BG-SP)

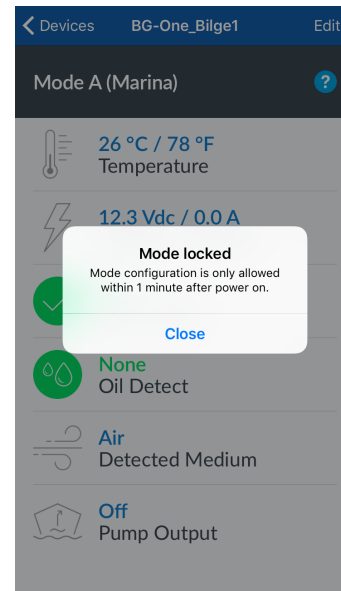
After Water Detection Event (Normal) – Set pump run time (15-60 seconds). Factory default is 15 seconds

After Oil Detection Event – Set pump run time after oil detection (3-15 seconds). Factory default is 3 seconds (BG-One Only)

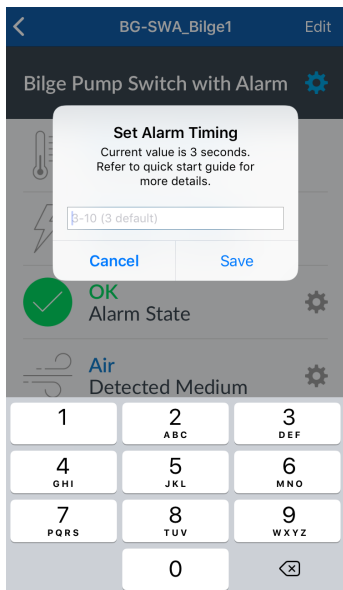
*After water is detected or water is detected for five seconds after oil is detected, the pump will be activated. The pump timer set above will start when the sensor detects air during pump activation. As long as the BG-One is sensing water, the switch/pump will be on.



— **“Edit”** Set Custom Name (Up to 10 Characters)

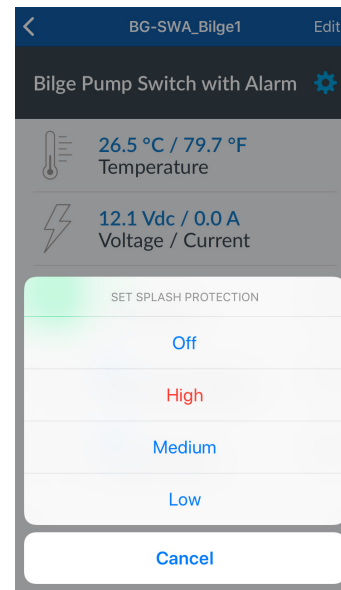


— **Edit Locked** Locks after 1 minute (Requires power cycling of device to unlock)
 — **Mode Locked** Locks after 1 minute (Requires power cycling of device to unlock)



⚙️ **Set Alarm Timing*** 3-10 seconds (BG-SWA)

— *If the sensor continues to see water while the pump is on for the set alarm time, the high water alarm will activate. Factory default is 3 seconds.



— **Set Splash Protection** (BG-SWA, BG-SP)
 Off, Low, Medium, High