



*Marine*  
PRODUCT  
CATALOG **2022**



**SAFE**

**SIMPLE**

**SECURE**

## ABOUT OUR COMPANY

SmartPlug Systems is a privately held manufacturing firm specializing in power delivery systems. It was founded in 2007 and is located in Seattle, WA. Its flagship product, the SmartPlug, is a patented device positioned to replace the current power delivery system for Boats, RV's and a variety of specialty vehicles and miscellaneous industrial applications.

SmartPlug Systems  
2500 Westlake Avenue North, Suite G  
Seattle, WA 98109-2262  
Phone - (206) 285-2990  
Fax - (206) 285-2981  
info@smartplug.com  
www.SmartPlug.com



## OUR COMMITMENT TO OUR CUSTOMERS

### SAFE

- Reduces Overheating
- Reduced Fire Risk
- Increases Peace of Mind

### SIMPLE

- Self-Aligning
- One Handed Operation
- Fail Safe

### SECURE

- Four Locking Features
- Strong, Stable Connection
- Cover Engages Plug

### OUR VISION

To improve industry safety and performance standards for recreational and commercial marine power delivery systems.



## CATALOG CONTENTS

|                                     |         |
|-------------------------------------|---------|
| About Our Company                   | 2       |
| Old Technology                      | 4 - 5   |
| Why SmartPlug                       | 6       |
| Testimonials                        | 7       |
| Connector Installation              | 8       |
| Cordset Features & Reverse Polarity | 9 - 10  |
| US - 15 AMP                         | 11      |
| US - 30 AMP                         | 12 - 13 |
| US - 50 AMP                         | 14 - 15 |
| EURO - 16 AMP                       | 16 - 17 |
| EURO - 32 AMP                       | 18 - 19 |
| ELCI Sensors & Breakers             | 20 - 21 |
| Data Ports / Accessories            | 22      |
| Service Kits                        | 23      |

## MARINA / DOCKSIDE POWER PRODUCTS 24

|                               |         |
|-------------------------------|---------|
| Dockside Solutions            | 25      |
| Receptacles & Weather Doors   | 26      |
| Receptacle Kits & Spare Parts | 27      |
| Dock & Lift Kits              | 28      |
| Marina Power Products         | 29 - 31 |

Contrary to popular belief, the #1 cause of shore power failure and fires is not electrical shorting, but rather overheating caused by poor electrical conductivity.

DID YOU KNOW?

Shore power delivery systems have remained virtually unchanged since they first came out in 1938.

**United States Patent** (19)  
**Poliak et al.**

[54] **TWIST-TYPE ELECTRICAL CONNECTOR WITH SAFETY INTERLOCK** 968,053 4/1971 Canada..... 339,90 R

[75] Inventors: **John M. Poliak, East Meadow, Joan M. Lappé, New York, both of N.Y.** Primary Examiner—Roy Lako  
 Attorney, Agent, or Firm—Hans H. Hamilton

[73] Assignee: **Letson Manufacturing Co., Inc., Little Neck, N.Y.**

[22] Filed: Oct. 15, 1974 [57] **ABSTRACT**

[21] Appl. No: 514,554

[52] U.S. Cl. .... 330/88 R; 339/181 C; 339/189 R The present invention relates to a twist-type electrical connector having an improved interlock. In the connector, a plug and a receptacle are rotated tangentially relative to each other to bring electrical contacts into engagement and to prevent accidental separation of the plug and receptacle. Entrance slots in the receptacle receive the male blades and carry detents which engage with a rear edge of at least one of the male blades and hold the blades in the seated or rotated position. The detents also provide an indication as to when proper connections have been established and also prevent accidental counterrotation of the contacts.

[58] **Field of Search** ... 330/74 R, 88 R, 89 C, 90 R, 339/90 C, 181 R, 181 C, 188 R, 188 C, 189 T, 189 R

[56] **Reference Cited**

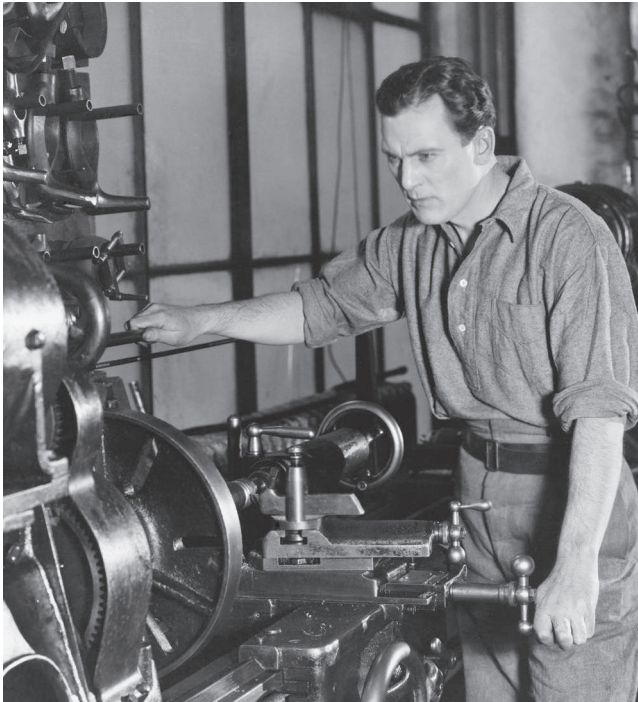
**UNITED STATES PATENTS**

3,123,423 3/1964 Johnson..... 339/88 C  
 5,292,135 12/1966 Robinson..... 339/88 C

**FOREIGN PATENTS OR APPLICATIONS**

655,388 1/1962 Canada..... 339/90 R

4 Claims, 8 Drawing Figures



THE PROBLEM WITH THE ORIGINAL SYSTEM

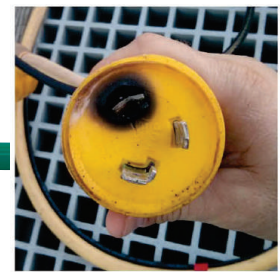
The shape of electrical pins allows for very little contact area, and the pins themselves are also largely responsible for bearing any physical stress placed on the cord (from constant movement of the boat, someone tripping on the cord, etc.) This results in the pins working loose, further lessening the precious little contact area they had to begin with. Furthermore, such loose connections allow for moisture intrusion and ultimately corrosion of the pins. Arcing occurs and the connection heats up, scorches, and in some cases, catches fire. Because the current draw is unchanged, all of this happens long before a breaker or a GFCI can cut the power. Additionally, the old design can be very difficult to use in low light or hard-to-reach scenarios since the "L" shaped pin must first be located and then oriented before connection.

## THE PROBLEM

NOT ENOUGH METAL TO METAL CONTACT AREA



### TWIST-TYPE PRODUCTS DESIGN FLAWS



- Curved Electrical Pin & Clips / Difficult to Align / Limited Contact Area  
Pin contact affected by cord weight & movement / Reduces contact area / Creates heat.
- Visible Gap Between Body of Plug & Inlet Housing  
Allows moisture intrusion which creates corrosion, arcing & heat buildup.
- Not Weather Proof - Legacy Design Does Not Include Gasket Systems  
Results in corrosion which is a major cause of overheating.

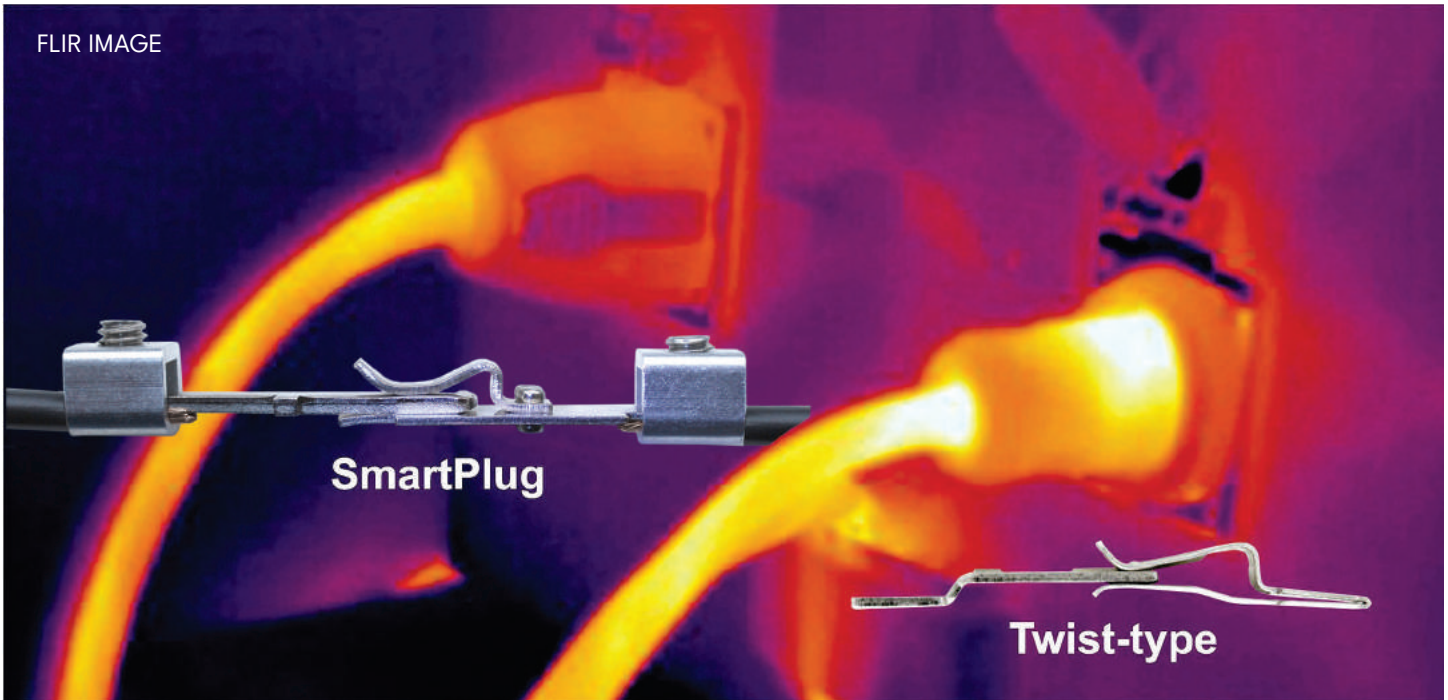


# THE SOLUTION

SMARTPLUG HAS OVER 27 TIMES THE METAL TO METAL CONTACT AREA



SAFER - MORE METAL CONTACT REDUCES OVERHEATING



**SmartPlug 30 Amp**

**Over 27X The Contact Area**

- Back of Pin = 16.4 mm x 8.5 mm = 139.4 sq mm
- Front of Pin = 6 mm x 8.5 mm = 51 sq mm

Total Contact Area = 190.4 sq mm

**30 Amp Twist-type**

**30A Twist-type - Surface Contact Area**

- Back of Pin = 1.3 mm x 2.7 mm = 3.51 sq mm
- Front of Pin = 1.3 mm x 2.4 mm = 3.12 sq mm

Total Contact Area With Dimple Locked In Place = 6.63 sq mm

## TESTIMONIALS

### THEY SAID IT

"We installed SmartPlug on our trawler about a year ago. We hated the original 50 amp plug - Karen was never able to wrestle it onto the boat connector and it always felt a bit unstable. The installation was simple. The whole thing took about an hour with the "help" of our two dogs.

Now after having it for a year and traveling about 6,000 miles along the Great Loop, we've used it at a hundred marinas. It has been exceptional. It's easy to use (even for Karen) and we feel safer having a much better product on-board for such a critical connection. The design is fantastic - well done, SmartPlug. You get five stars from us!"

Karen & Jeffrey Siegel  
MV aCappella  
Developers of Active Captain

"Have had SmartPlugs on my boat for 2 years since I purchased the boat, were installed 6 years prior. They are awesome! Have heavy draws at dock, in excess of 27 amps for 30 minutes in winter, and 28 plus amps 12-20 hours a day in summer from AC units. SmartPlugs rule! Totally kill the other plugs, which I am having to replace just about every year on the other end of the cable! Just got off the phone with Terry at SmartPlug, and he was very nice and quickly shipped me out a new gasket set. Highly recommend this solution for power!"

Charles M. Green IV

"As the Technical Director at BoatUS for almost 30 years, one of my responsibilities was to read through insurance claims to find out why accidents occur on boats and how they might have been prevented."

These were reported in Seaworthy, the BoatUS marine insurance damage avoidance publication. One of the more troubling findings I encountered was the surprising number of on-board fires at a boat's AC shore power inlet. The reason for the fires was well known by fire investigators. Instead of being securely bolted like a house connection, boats have to rely on a sliding plug that, over time, tends to wear and corrode. This results in a looser connection that generates excessive heat and causes fires. The latter have destroyed hundreds of boats and even entire marinas.

While at an industry trade show I came across a common sense solution: The aptly-named SmartPlug. By locking the shore-power cord securely, SmartPlug creates a much tighter connection between the shore power cord and the boats AC inlet. It is my hope that these locking plugs will become the new standard for bringing AC electricity aboard recreational boats. It's a solution that is long overdue."

Bob Adriaance  
Technical Director at BoatUS Marine Insurance (retired)



# 4 EASY STEPS TO SAFETY

CUT OFF YOUR PLUG HEAD

STEP 1



STEP 2

STRIP AND PREPARE WIRE



STEP 3

ATTACH WIRES TO PLUG HEAD



STEP 4

ASSEMBLE PLUG HEAD AND GASKET



## NO TWISTING! SELF CLEANING PUSH-IN DESIGN



**STAINLESS STEEL INLET**  
316 cast stainless steel for maximum corrosion resistance.



**NON-METALLIC INLETS**  
Produced with UV resistant materials.

## INLET & CONNECTOR FEATURES

**LED TWO COLOR REVERSE POLARITY AND POWER LIGHTS**  
One red and one blue LED light for Safe/Unsafe Electrical Power Indication under Reverse Polarity Conditions.

**LOCKING FEATURES**  
Dual 316 SS side locking levers snap into sides of inlet housing.

**WATERPROOF**  
On piece PVC overmolded cord seal to keep water out.  
(only on factory cordsets)

**CONNECTOR BODY SHAPE**  
Sleeve design fits snugly within inlet, removing all tension from pins & clips.  
Easy one-handed insertion.

**WEATHERPROOF**  
Superior gasket seals against inlet sleeve to eliminate dirt and moisture exposure on electrical pins.

**WEATHERPROOF**  
Face gasket seals.  
Now IP56 rated.

**INLET CASE CONSTRUCTION**  
316 cast stainless steel for maximum corrosion resistance.  
Also offered in non-metallic high strength UV resistant material.

**ELECTRICAL PINS**  
Straight pins with 27X more surface area. No twisting required!

**EASE OF USE**  
Unique plug body shape only goes in the correct way. Easy to orient with no misalignment - even in the dark! Pushes straight in & locks automatically.



## CORDSET FEATURES

The revolutionary SmartPlug cordsets replace old, outdated twist-type shore power cords. The unique SmartPlug cables use tinned wire to minimize corrosion from the elements. Our Superflex cable combines flexibility and durability, and are easy to coil even in freezing weather.



# *SUPERFLEX*

## BEST IN THE INDUSTRY

- Corrosion Resistant
- Tinned Wire
- Heavy Duty Cable
- Stows Easily & Remains Flexible
- Coils Tightly Even In Freezing Weather



## REVERSE POLARITY

Reverse Polarity occurs when unknowingly connecting a cordset to a power pedestal that has the positive and negative leads reversed internally. Reverse polarity is a safety concern and if it occurs, the pedestal connection has the potential to cause damage to the internal electrical components on your vessel. This unsafe condition exists when the power coming from the pedestal is improperly wired.

New for 2021 is SmartPlug's Reverse Polarity Indicator System. Reverse Polarity is a safety concern and can damage electrical components on a coach or trailer. On top of all SmartPlug coachside power cord connectors are two LED Indicator Lights, one blue and one red. When the SmartPlug is connected to a power source the lights will illuminate to indicate the status of a safe or unsafe condition. Our cordsets are weatherproof and easy to use, plus they ensure your family can safely enjoy their next adventure.



- Blue ON Red OFF: Normal power condition. OK TO PROCEED.
- Blue ON Red ON: L1 and neutral are swapped in a reverse polarity condition. DISCONNECT CORDSET FROM POWER SOURCE AND IMMEDIATELY CONTACT MANAGEMENT.
- Blue OFF Red ON: L1 and Ground are swapped in a DANGEROUS GROUND CONDITION. DISCONNECT CORDSET FROM POWER SOURCE AND IMMEDIATELY CONTACT MANAGEMENT.
- Blue OFF Red OFF: No power condition. CHECK CONNECTION AND POWER.

\*Not available on harmonized cords

## 15 AMP - US

### DESCRIPTION

This cord can be plugged into a standard household current and be the main cord for charging electric boats. Fully tinned wires.



### 15 AMP CORDSET WITH REVERSE POLARITY INDICATOR LIGHT

Dual Configuration - 15 Amp / 125VAC Cordset - 15 Amp STD Male Wall Plug x 30 Amp SmartPlug Female Connector

| PART NUMBER | DESCRIPTION   | LENGTH | COLOR  | BOATSIDE         | DOCKSIDE         |
|-------------|---|--------|--------|------------------|------------------|
| C15043      | 15 Amp / 125V Cordset - 30 Amp SmartPlug Female Connector X 15 Amp Male Wall Plug | 4ft    | Orange | 30 Amp SmartPlug | 15 Amp Wall Plug |
| C15253      | 15 Amp / 125V Cordset - 30 Amp SmartPlug Female Connector X 15 Amp Male Wall Plug | 25ft   | Orange | 30 Amp SmartPlug | 15 Amp Wall Plug |
| C15503      | 15 Amp / 125V Cordset - 30 Amp SmartPlug Female Connector X 15 Amp Male Wall Plug | 50ft   | Orange | 30 Amp SmartPlug | 15 Amp Wall Plug |



# 30 AMP - US

## 30 AMP INLETS

| PART NUMBER | DESCRIPTION                       | MATERIAL        | COLOR     |
|-------------|-----------------------------------|-----------------|-----------|
| BM30NT      | 30 Amp / 125V Male Boatside Inlet | Stainless Steel | Stainless |
| BM30PW      | 30 Amp / 125V Male Boatside Inlet | Non-metallic    | White     |
| BM30PG      | 30 Amp / 125V Male Boatside Inlet | Non-metallic    | Gray      |
| BM30PB      | 30 Amp / 125V Male Boatside Inlet | Non-metallic    | Black     |



## 30 AMP CONNECTOR

| PART NUMBER | DESCRIPTION   | MATERIAL     | COLOR  |
|-------------|---|--------------|--------|
| BF30        | 30 Amp / 125V / SmartPlug Female Cord End Connector | Non-Metallic | Orange |



## 30 AMP COMBO KITS

| PART NUMBER | DESCRIPTION   | INLET           |           |
|-------------|---|-----------------|-----------|
|             |   | MATERIAL        | COLOR     |
| B30ASSYNT   | 30 Amp / 125V Inlet Male - Boatside Inlet and Female Cord End Connector | Stainless Steel | Stainless |
| B30ASSYPW   | 30 Amp / 125V Inlet Male - Boatside Inlet and Female Cord End Connector | Non-Metallic    | White     |
| B30ASSYPG   | 30 Amp / 125V Inlet Male - Boatside Inlet and Female Cord End Connector | Non-Metallic    | Gray      |
| B30ASSYPB   | 30 Amp / 125V Inlet Male - Boatside Inlet and Female Cord End Connector | Non-Metallic    | Black     |



## 30 AMP - US

### DESCRIPTION

This cord allows you to connect to a standard 30A Twist-type pedestal and a boatside SmartPlug 30A inlet. Fully tinned wires.



### 30 AMP CORDSETS WITH REVERSE POLARITY INDICATOR LIGHT

Dual Configuration - 30 Amp / 125V Cordset / SmartPlug Female Boatside Connector w/ Dockside Twist-type Male Connector  
Includes Storage Bag

| PART NUMBER | DESCRIPTION   | LENGTH | COLOR  | BOATSIDE         | DOCKSIDE                |
|-------------|---|--------|--------|------------------|-------------------------|
| C30253      | 30 Amp / 125V Cordset - 30 Amp SmartPlug Female Boatside Connector 30 Amp / 125V - Twist-type Dockside Male Connector | 25ft   | Orange | 30 Amp SmartPlug | 30 Amp Twist-type L5-30 |
| C30253W     | 30 Amp / 125V Cordset - 30 Amp SmartPlug Female Boatside Connector 30 Amp / 125V - Twist-type Dockside Male Connector | 25ft   | White  | 30 Amp SmartPlug | 30 Amp Twist-type L5-30 |
| C30503      | 30 Amp / 125V Cordset - 30 Amp SmartPlug Female Boatside Connector 30 Amp / 125V - Twist-type Dockside Male Connector | 50ft   | Orange | 30 Amp SmartPlug | 30 Amp Twist-type L5-30 |
| C30503W     | 30 Amp / 125V Cordset - 30 Amp SmartPlug Female Boatside Connector 30 Amp / 125V - Twist-type Dockside Male Connector | 50ft   | White  | 30 Amp SmartPlug | 30 Amp Twist-type L5-30 |



### 30 AMP CORDSETS & INLETS WITH REVERSE POLARITY INDICATOR LIGHT

Dual Configuration - 30 Amp / 125V Cordset - 30A SmartPlug Female Boatside Connector & 30 Amp Twist-type Male Dockside Connector & 30 Amp Male Boatside Inlet  
Includes Storage Bag

| PART NUMBER  | DESCRIPTION   | LENGTH | CONNECTOR |               |                      |                 | INLET     |  |
|--------------|---|--------|-----------|---------------|----------------------|-----------------|-----------|--|
|              |   |        | COLOR     | BOATSIDE      | DOCKSIDE             | MATERIAL        | COLOR     |  |
| C30503BM30NT | 30 Amp / 125V Cordset / 30 Amp SmartPlug Female Boatside Connector & 30 Amp Twist-type Male Dockside Connector & 30 Amp Stainless Steel Inlet | 50ft   | Orange    | 30A SmartPlug | 30A Twist-type L5-30 | Stainless Steel | Stainless |  |
| C30503BM30PW | 30 Amp / 125V Cordset / 30 Amp SmartPlug Female Boatside Connector & 30 Amp Twist-type Male Dockside Connector & 30 Amp Non-Metallic Inlet    | 50ft   | Orange    | 30A SmartPlug | 30A Twist-type L5-30 | Non-Metallic    | White     |  |
| C30503BM30PG | 30 Amp / 125V Cordset / 30 Amp SmartPlug Female Boatside Connector & 30 Amp Twist-type Male Dockside Connector & 30 Amp Non-Metallic Inlet    | 50ft   | Orange    | 30A SmartPlug | 30A Twist-type L5-30 | Non-Metallic    | Gray      |  |
| C30503BM30PB | 30 Amp / 125V Cordset / 30 Amp SmartPlug Female Boatside Connector & 30 Amp Twist-type Male Dockside Connector & 30 Amp Non-Metallic Inlet    | 50ft   | Orange    | 30A SmartPlug | 30A Twist-type L5-30 | Non-Metallic    | Black     |  |

# 50 AMP - US

## 50 AMP INLETS

| PART NUMBER | DESCRIPTION                              | MATERIAL        | COLOR     |
|-------------|--|-----------------|-----------|
| BM50S       | 50 Amp / 125V / 250V Male Boatside Inlet | Stainless Steel | Stainless |
| BM50PW      | 50 Amp / 125V / 250V Male Boatside Inlet | Non-metallic    | White     |
| BM50PG      | 50 Amp / 125V / 250V Male Boatside Inlet | Non-metallic    | Gray      |
| BM50PB      | 50 Amp / 125V / 250V Male Boatside Inlet | Non-metallic    | Black     |



## 50 AMP CONNECTOR

| PART NUMBER | DESCRIPTION  | MATERIAL     | COLOR  |
|-------------|--|--------------|--------|
| BF50        | 50 Amp / 125V / 250V / SmartPlug Female Cord End Connector | Non-Metallic | Orange |



## 50 AMP COMBO KITS

| PART NUMBER | DESCRIPTION  | INLET           |           |
|-------------|--|-----------------|-----------|
|             |  | MATERIAL        | COLOR     |
| B50ASSY     | 50 Amp / 125V / 250V Inlet Male - Boatside Inlet and Female Cord End Connector | Stainless Steel | Stainless |
| B50ASSYPW   | 50 Amp / 125V / 250V Inlet Male - Boatside Inlet and Female Cord End Connector | Non-Metallic    | White     |
| B50ASSYPG   | 50 Amp / 125V / 250V Inlet Male - Boatside Inlet and Female Cord End Connector | Non-Metallic    | Gray      |
| B50ASSYPB   | 50 Amp / 125V / 250V Inlet Male - Boatside Inlet and Female Cord End Connector | Non-Metallic    | Black     |





**DESCRIPTION**

This cord allows you to connect to a standard 50A Twist-type pedestal and a boatside SmartPlug 50A inlet. Fully tinned wires.



C50254  
25ft



C50504  
50ft

**50 AMP CORDSETS WITH REVERSE POLARITY INDICATOR LIGHT**

Dual Configuration - 50 Amp / 125V / 250V SmartPlug Female  
Boatside & 50 Amp Twist-type Male 125V / 250V Dockside

| PART NUMBER | DESCRIPTION  | LENGTH | COLOR  | BOATSIDE         | DOCKSIDE                  |
|-------------|--|--------|--------|------------------|---------------------------|
| C50254      | 50 Amp / 125V / 250V Cordset - SmartPlug Female Boatside X 50 Amp Male Twist-type Dockside Connector | 25ft   | Orange | 50 Amp SmartPlug | 50 Amp Twist-type SS2-50P |
| C50504      | 50 Amp / 125V / 250V Cordset - SmartPlug Female Boatside X 50 Amp Male Twist-type Dockside Connector | 50ft   | Orange | 50 Amp SmartPlug | 50 Amp Twist-type SS2-50P |

## 16 AMP - EURO



### 16 AMP INLETS

| PART NUMBER | DESCRIPTION                               | MATERIAL        | COLOR     |
|-------------|---|-----------------|-----------|
| BM16NT      | 16 Amp / 230V Inlet / Male Boatside Inlet | Stainless Steel | Stainless |
| BM16PW      | 16 Amp / 230V Inlet / Male Boatside Inlet | Non-Metallic    | White     |
| BM16PG      | 16 Amp / 230V Inlet / Male Boatside Inlet | Non-Metallic    | Gray      |
| BM16PB      | 16 Amp / 230V Inlet / Male Boatside Inlet | Non-Metallic    | Black     |



### 16 AMP CONNECTOR

| PART NUMBER | DESCRIPTION                                       | MATERIAL     | COLOR  |
|-------------|---|--------------|--------|
| BF16        | 16 Amp / 230V SmartPlug Female Cord End Connector | Non-Metallic | Orange |







## 16 AMP COMBO KITS

| PART NUMBER | DESCRIPTION   | INLET           |           |
|-------------|---|-----------------|-----------|
|             |   | MATERIAL        | COLOR     |
| B16ASSYNT   | 16 Amp / 230V Inlet Male - Boatside Inlet and Female Cord End Connector | Stainless Steel | Stainless |
| B16ASSYPW   | 16 Amp / 230V Inlet Male - Boatside Inlet and Female Cord End Connector | Non-Metallic    | White     |
| B16ASSYPG   | 16 Amp / 230V Inlet Male - Boatside Inlet and Female Cord End Connector | Non-Metallic    | Gray      |
| B16ASSYPB   | 16 Amp / 230V Inlet Male - Boatside Inlet and Female Cord End Connector | Non-Metallic    | Black     |

## DESCRIPTION

This cord allows you to connect to a european 16A SmartPlug inlet and attach your own connector to the dockside end.



## 16 AMP HARMONIZED CORDS WITH REVERSE POLARITY INDICATOR LIGHT

Single Configuration - 16 Amp / 230V Harmonized Cord - Female Connector w/ Open End

| PART NUMBER | DESCRIPTION  | LENGTH | COLOR  | BOATSIDE         | DOCKSIDE |
|-------------|--|--------|--------|------------------|----------|
| C16123      | 16 Amp / 230V Cord - 16A SmartPlug Female Connector X Open End | 12.5M  | Orange | 16 Amp SmartPlug | Open End |
| C16253      | 16 Amp / 230V Cord - 16A SmartPlug Female Connector X Open End | 25M    | Orange | 16 Amp SmartPlug | Open End |

## 32 AMP - EURO



### 32 AMP INLETS

| PART NUMBER | DESCRIPTION                                | MATERIAL        | COLOR     |
|-------------|--|-----------------|-----------|
| BM32S       | 32 Amp / 230V Inlet / Male Boat-side Inlet | Stainless Steel | Stainless |
| BM32PW      | 32 Amp / 230V Inlet / Male Boat-side Inlet | Non-Metallic    | White     |
| BM32PG      | 32 Amp / 230V Inlet / Male Boat-side Inlet | Non-Metallic    | Gray      |
| BM32PB      | 32 Amp / 230V Inlet / Male Boat-side Inlet | Non-Metallic    | Black     |



### 32 AMP CONNECTOR

| PART NUMBER | DESCRIPTION                                       | MATERIAL     | COLOR  |
|-------------|---|--------------|--------|
| BF32        | 32 Amp / 230V SmartPlug Female Cord End Connector | Non-Metallic | Orange |





### 32 AMP COMBO KITS

| PART NUMBER | DESCRIPTION   | INLET           |           |
|-------------|---|-----------------|-----------|
|             |   | MATERIAL        | COLOR     |
| B32ASSY     | 32 Amp / 230V Inlet Male - Boatside Inlet and Female Cord End Connector | Stainless Steel | Stainless |
| B32ASSYPW   | 32 Amp / 230V Inlet Male - Boatside Inlet and Female Cord End Connector | Non-Metallic    | White     |
| B32ASSYPG   | 32 Amp / 230V Inlet Male - Boatside Inlet and Female Cord End Connector | Non-Metallic    | Gray      |
| B32ASSYPB   | 32 Amp / 230V Inlet Male - Boatside Inlet and Female Cord End Connector | Non-Metallic    | Black     |

### DESCRIPTION

This cord allows you to connect to a european 32A SmartPlug inlet and attach your own connector to the dockside end.



### 32 AMP HARMONIZED CORDS WITH REVERSE POLARITY INDICATOR LIGHT

Single Configuration - 32 Amp / 230V Cord - 32 Amp SmartPlug Female Connector X Open End

| PART NUMBER | DESCRIPTION  | LENGTH | COLOR  | BOATSIDE         | DOCKSIDE |
|-------------|--|--------|--------|------------------|----------|
| C32153      | 32 Amp / 230V Cord - 32 Amp SmartPlug Female Boatside Connector X Open End | 15M    | Orange | 32 Amp SmartPlug | Open End |
| C32253      | 32 Amp / 230V Cord - 32 Amp SmartPlug Female Boatside Connector X Open End | 25M    | Orange | 32 Amp SmartPlug | Open End |

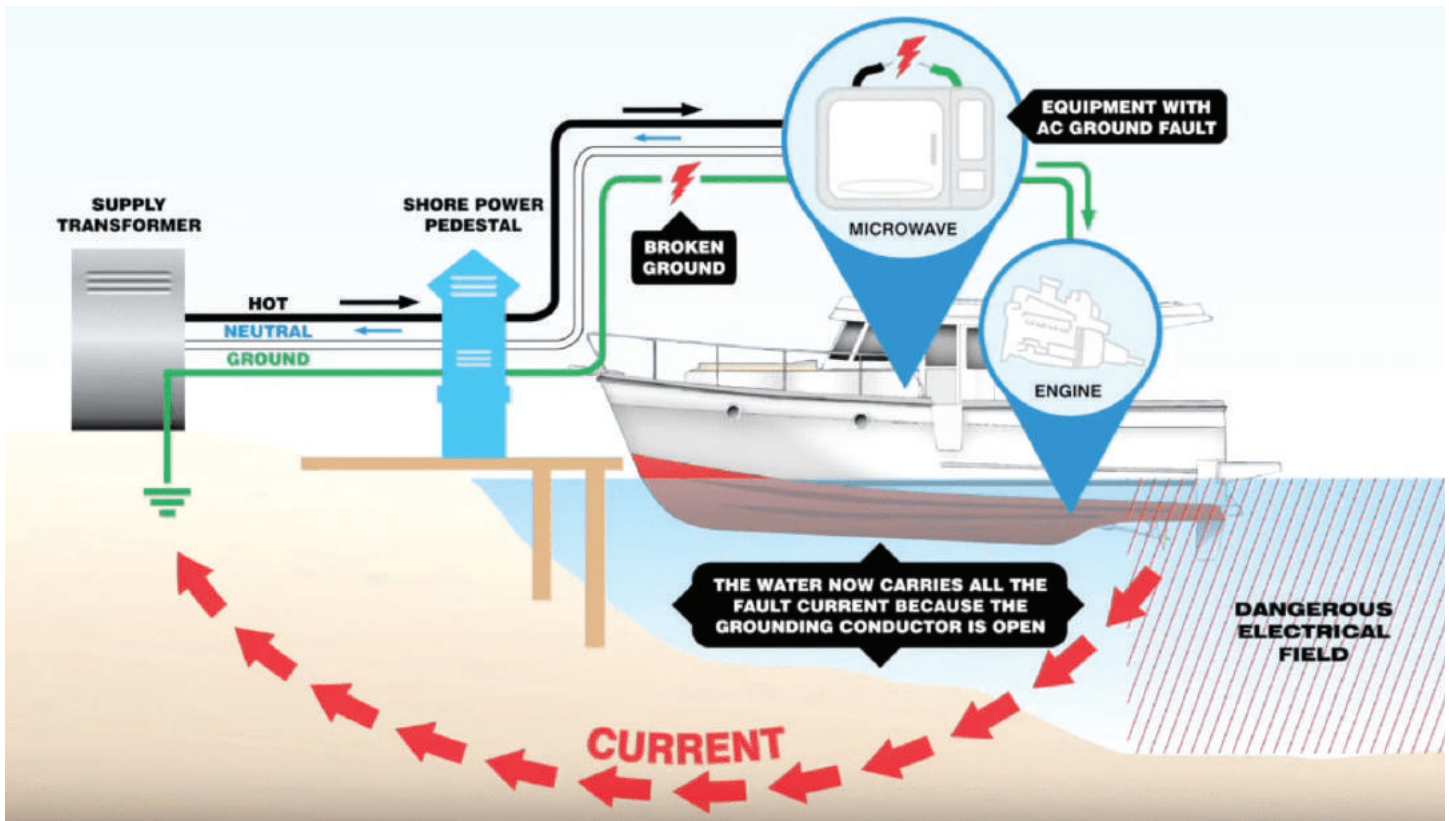
**ELCIs HELP PREVENT ELECTRICAL SHOCK DROWNING**

Electric Shock Drowning (ESD) severely injures and kills people every year. ESD occurs when faulty wiring sends electric current into the water which passes through the body and causes paralysis. This could ultimately result in drowning. With ESD a swimmer does not need to be touching a boat or dock structure. Small amounts of electricity can be incapacitating and lead to drowning.

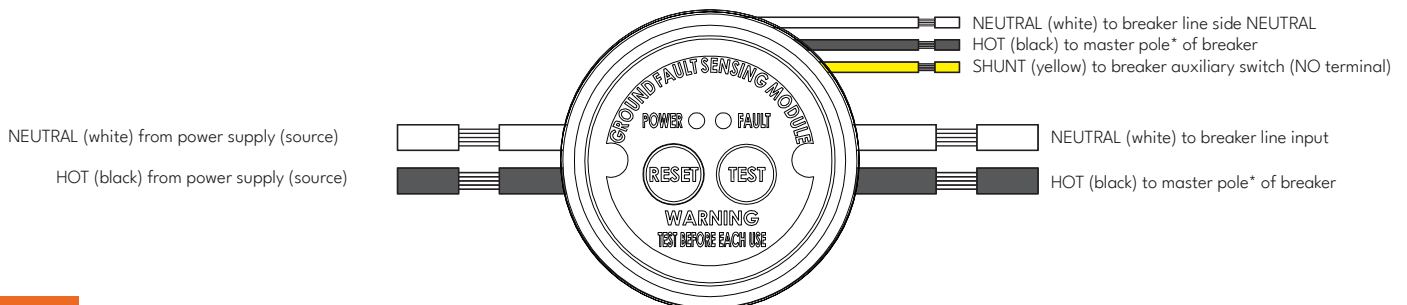
ELCIs measure current flow in the hot and neutral wires and immediately switch the electricity off if an imbalance of current flow is detected. Retrofitting an ELCI to an existing AC system can be worthwhile to protect your family from the danger of electric shock in the water. ELCI protection on each shore power line will reduce risk to those on the boat, the dock, and in the water surrounding the boat.

**FEATURES**

- Power and fault status indicators
- Provides identification of a ground fault vs. short circuit trip
- Chemical and UV resistant enclosure
- Trip level of sensing device < 30mA (27mA nominal) at trip time of < 100mS (60mS nominal) per ABYC E-11
- Power range and operating voltage: 0 - 50 Amps, 120 / 240 VAC
- Unit operating temperature is -35° C to +66° C
- Accommodates up to 3 wires, 6 AWG



**WIRING DIAGRAM (120 VAC APPLICATION FOR ELCI SENSOR)**





**STAINLESS COMBO KITS - ELCI SENSOR / BREAKER**

| PART NUMBER  | DESCRIPTION  | MATERIAL        | COLOR     |
|--------------|--|-----------------|-----------|
| ELCIBRKR30SS | Combo Kit - ELCI Sensor & 30 Amp Breaker / Stainless Steel | Stainless Steel | Stainless |
| ELCIBRKR50SS | Combo Kit - ELCI Sensor & 50 Amp Breaker / Stainless Steel | Stainless Steel | Stainless |

**WHITE NON-METALLIC COMBO KITS - ELCI SENSOR / BREAKER**

| PART NUMBER  | DESCRIPTION   | MATERIAL     | COLOR |
|--------------|---|--------------|-------|
| ELCIBRKR30PW | Combo Kit - ELCI Sensor & 30 Amp Breaker / White Non-metallic | Non-Metallic | White |
| ELCIBRKR50PW | Combo Kit - ELCI Sensor & 50 Amp Breaker / White Non-metallic | Non-Metallic | White |

**INDIVIDUAL COMPONENTS - STAINLESS STEEL / ELCI SENSOR / BREAKER**

Designed to work specifically with ELCI30BRKERSS & ELCI50BRKERSS

| PART NUMBER   | DESCRIPTION   | MATERIAL        | COLOR     |
|---------------|---|-----------------|-----------|
| ELCISENSORSS  | 30 Amp / 50 Amp - ELCI Sensor - Stainless Steel   | Stainless Steel | Stainless |
| ELCI30BRKERSS | 30 Amp Breaker - Stainless Steel<br>Special 30 Amp trip breaker to work with ELCI sensor ELCISENSORSS | Stainless Steel | Stainless |
| ELCI50BRKERSS | 50 Amp Breaker - Stainless Steel<br>Special 30 Amp trip breaker to work with ELCI sensor ELCISENSORSS | Stainless Steel | Stainless |

**INDIVIDUAL COMPONENTS - NON-METALLIC / ELCI SENSOR / BREAKER**

Designed to work specifically with ELCI30BRKERNMW & ELCI50BRKERNMW

| PART NUMBER    | DESCRIPTION   | MATERIAL     | COLOR |
|----------------|---|--------------|-------|
| ELCISENSORNMW  | 30 Amp / 50 Amp - ELCI Sensor - White Non-Metallic  | Non-Metallic | White |
| ELCI30BRKERNMW | 30 Amp Breaker - White Non-Metallic<br>Special 30 Amp trip breaker to work with ELCI sensor ELCISENSORNMW | Non-Metallic | White |
| ELCI50BRKERNMW | 50 Amp Breaker - White Non-Metallic<br>Special 30 Amp trip breaker to work with ELCI sensor ELCISENSORNMW | Non-Metallic | White |

## DATA PORTS

### PHONE / TV / CABLE / INTERNET



The SmartPlug Data Port products are the perfect complement to our shore power inlets. They are available in coax cable, ethernet and mixed combinations.



| PART NUMBER | DESCRIPTION  | MATERIAL        | COLOR     |
|-------------|--|-----------------|-----------|
| BDCOAX      | Single - TV / Internet Connector - Stainless Steel         | Stainless Steel | Stainless |
| BDCOAXCC    | Double - TV / Internet Connector - Stainless Steel         | Stainless Steel | Stainless |
| BDETH       | Single - Ethernet Cable Connector - Stainless Steel        | Stainless Steel | Stainless |
| BDCOAXEC    | Combo - TV / Internet Connector & Ethernet Cable Connector | Stainless Steel | Stainless |
| BDCOAXPW    | Single - TV / Internet Connector                           | Non-Metallic    | White     |
| BDCOAXPG    | Single - TV / Internet Connector                           | Non-Metallic    | Gray      |
| BDCOAXPB    | Single - TV / Internet Connector                           | Non-Metallic    | Black     |
| BDCOAXCCPG  | Double - TV / Internet Connector                           | Non-Metallic    | Gray      |

## ACCESSORIES



### 16, 30, 32 & 50 AMP - WEATHER CAP

The SmartPlug Weather Cap protects the SmartPlug shore power connectors from moisture when not in use. These weather resistant caps come with a convenient lanyard for tethering the cover to the cordset.

#### PART NUMBER

A1001

### 16, 30, 32 & 50 AMP CARRY BAG

The SmartPlug cordset bag provides a convenient way to transport and store your cordset. The cordset bag includes handles and a zipper for easy use.

| PART NUMBER | FITS CORDS SETS   |
|-------------|---|
| CB1001      | 16 Amp - 12.5 m, 25 m & 32 Amp - 25 m<br>30 Amp - 25 ft, 50 ft & 50 Amp - 25 ft |



# SERVICE KITS

SmartPlug service kits provide all of the electrical components, hardware, and gaskets required to replace or repair the SmartPlug products.

## FEMALE CONNECTOR / ELECTRICAL

SERVICE KITS / FOR BF30, F50, BF16 & BF32 PRODUCTS



| PART NUMBER | DESCRIPTION  |
|-------------|--|
| PKF30       | Service Kit - 30 Amp / 125V - SmartPlug BF30 Female Connector        |
| PKF50       | Service Kit - 50 Amp / 125V / 250V - SmartPlug BF50 Female Connector |
| PKF16       | Service Kit - 16 Amp / 230V - SmartPlug BF16 Female Connector        |
| PKF32       | Service Kit - 32 Amp / 230V - SmartPlug BF32 Female Connector        |

## SIDE LEVER KIT

SIDE LEVER KIT / REPLACEMENTS FOR ALL SMARTPLUG FEMALE CONNECTORS

| PART NUMBER | DESCRIPTION   |
|-------------|---|
| PKF01       | Side Lever Kit - Stainless Steel Levers, Pins And Springs To Fit All SmartPlug Connectors |



## MALE INLET CONNECTOR / ELECTRICAL

SERVICE KITS / FOR BM30, BM50, BM16, BM32, PRODUCTS



| PART NUMBER | DESCRIPTION  |
|-------------|--|
| PKM30       | Service Kit - 30 Amp / 125V - SmartPlug BM30 Male Inlet        |
| PKM50       | Service Kit - 50 Amp / 125V / 250V - SmartPlug BM50 Male Inlet |
| PKM16       | Service Kit - 16 Amp / 230V - SmartPlug BM16 Male Inlet        |
| PKM32       | Service Kit - 32 Amp / 230V - SmartPlug BM32 Male Inlet        |

## FEMALE CONNECTOR / GASKETS

GASKET KITS / REPLACES GASKETS FOR BF30, BF50, BF16 & BF32 PRODUCTS

| PART NUMBER | DESCRIPTION   |
|-------------|---|
| PKF30G      | Gasket Kit - 30 Amp / 125V - SmartPlug BF30 Female Connector        |
| PKF50G      | Gasket Kit - 50 Amp / 125V / 250V - SmartPlug BF50 Female Connector |
| PKF16G      | Gasket Kit - 16 Amp / 230V - SmartPlug BF16 Female Connector        |
| PKF32G      | Gasket Kit - 32 Amp / 230V - SmartPlug BF32 Female Connector        |



## MALE INLET / GASKETS

GASKET KIT / REPLACES GASKETS FOR BM30, BM50, BM16 & BM32 PRODUCTS

| PART NUMBER | DESCRIPTION  |
|-------------|--|
| PKMGKT      | Gasket Kit - Fits All SmartPlug Male Including Stainless & Non-metallic Inlets |

# MARINA / DOCKSIDE POWER PRODUCTS

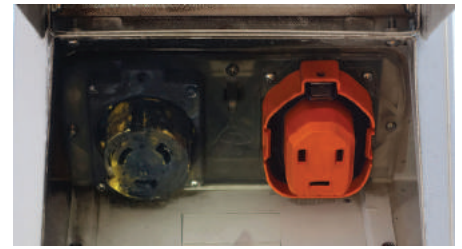




## DOCKSIDE SOLUTIONS

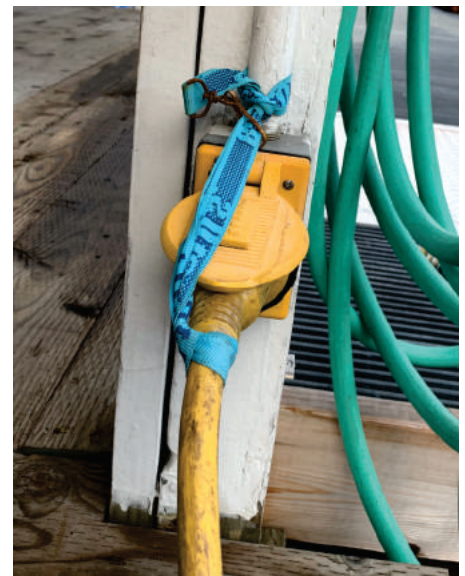
For many years boaters have experienced the safety, security and simplicity of SmartPlug products on the boatside while still dealing with the same old issues created by legacy twist-type products on the dockside. Those days are changing with the introduction of SmartPlug's New dockside product offering. SmartPlug has applied decades of experience and customer feedback to create a product line that allows you to upgrade your shore power connection with SmartPlug technology.

Most boaters have seen dangerous power cord connections on the docks. Legacy twist-type systems were never designed for the harsh marine environment. Pedestals with twist-type systems do not include weather gaskets or any mechanical locking system to secure the plug in the pedestal. The L-pin connector in the twist-type system is difficult to align and ensure a safe connection. With no positive locking mechanism the twist-type plug tries to disengage due to the downward pull of the cordset and dock movement from wind and waves. Below are some examples of jury-rigged solutions seen in marinas.



TWIST-TYPE INLET CHARRED FROM NORMAL USE

### LEGACY TWIST-TYPE CONNECTIONS



### SMARTPLUG MARINA / DOCKSIDE SOLUTIONS

#### SAFE - REDUCES OVERHEATING & FIRE POTENTIAL

- 27x more electrical contact area than the standard twist-type connectors
- Solid sleeve design helps reduce internal arcing and overheating
- Weather resistant seals reduce water intrusion and corrosion (stays nice & dry)

#### SIMPLE TO USE

- Easy alignment with one handed insertion
- Plugs straight in - no twisting required
- Automatic locking system

#### SECURE

- Multi-point locking system with stainless release
- 7 Year warranty - best in the industry
- Strong, stable connection with locking side and top clips



# RECEPTACLES / WEATHER DOORS

## MARINA / DOCKSIDE PRODUCTS

### EATON HATTERAS SMALL PEDESTAL/DOCKSIDE ELECTRICAL BOX



Vertical Weather Door With Receptacle

SmartPlug receptacles are designed to provide the maximum surface contact to efficiently transfer power while minimizing resistance which causes heat. These receptacles are used to upgrade existing marina pedestals. They can also be installed in industry standard outdoor electrical boxes when used in conjunction with our spring loaded weather doors.

SmartPlug plugs self-align with these receptacles and have an automatic lock system when engaged. The push in design provides self cleaning for the pins and clips which insures clean power transfer.

### 30 & 50 AMP RECEPTACLES

SMARTPLUG FEMALE 125V & 250V

| PART NUMBER | DESCRIPTION                                      | RECEPTACLE COLOR |
|-------------|--|------------------|
| RF30        | 30 Amp SmartPlug Female Receptacle / 125V        | Orange           |
| RF50        | 50 Amp SmartPlug Female Receptacle / 125V / 250V | Orange           |



### 30 & 50 AMP WEATHER DOORS

SMARTPLUG FEMALE 125V / 250V

WEATHER DOOR - 30 & 50 AMP (KNOCKOUT FOR 50 AMP)

| PART NUMBER | DESCRIPTION                               | WEATHER DOOR COLOR |
|-------------|---|--------------------|
| RDPWL       | 30 Amp / 50 Amp Weather Door / Horizontal | White              |
| RDPWP       | 30 Amp / 50 Amp Weather Door / Vertical   | White              |

## 30 & 50 AMP RECEPTACLE KITS

MARINA / DOCKSIDE PRODUCTS

### EATON LIGHTHOUSE RECEPTACLE CONVERSION KITS WITH SMARTPLUG RECEPTACLES



LHRF50ASSY



LHRF3050ASSY

| PART NUMBER  | DESCRIPTION  |
|--------------|--|
| LHRF30ASSY   | 30 Amp Single Receptacle Kit, (Includes: 30 Amp SmartPlug Receptacle, Main Eaton Mounting Bracket, 30 Amp SmartPlug Adapter Plate, Legacy Adapter Plate)   |
| LHRF50ASSY   | 50 Amp Single Receptacle Kit, (Includes: 50 Amp SmartPlug Receptacle, Main Eaton Mounting Bracket, 50 Amp SmartPlug Adapter Plate, Legacy Adapter Plate)   |
| LH2RF30ASSY  | 30 Amp Double Receptacle Kit, (Includes: (2) 30 Amp SmartPlug Receptacles, Main Eaton Mounting Bracket, (2) 30 Amp SmartPlug Adapter Plates)   |
| LH2RF50ASSY  | 50 Amp Double Receptacle Kit, (Includes: (2) 50 Amp SmartPlug Receptacles, Main Eaton Mounting Bracket, (2) 50 Amp SmartPlug Adapter Plates)   |
| LHRF3050ASSY | 30 Amp / 50 Amp Receptacle Kit, (Includes: (1) 30 Amp SmartPlug Receptacle, (1) 50 Amp SmartPlug Receptacle, Main Eaton Mounting Bracket, 30 Amp SmartPlug Adapter Plate and a 50 Amp SmartPlug Adapter Plate) |

## 30 & 50 AMP ADAPTERS

### EATON LIGHTHOUSE MOUNTING PLATE AND ADAPTERS



LHRBRKT30



LHRBRKTL530



LHRBRKTB

| PART NUMBER  | DESCRIPTION  |
|--------------|--|
| LHRBRKT      | Main Eaton Mounting Bracket - For Eaton Lighthouse Pedestal  |
| LHRBRKT30    | Plate - SmartPlug - 30 Amp Adapter Plate - To fit a SmartPlug Receptacle into an Eaton Lighthouse Pedestal |
| LHRBRKT50    | Plate - SmartPlug - 50 Amp Adapter Plate - To fit a SmartPlug Receptacle into an Eaton Lighthouse Pedestal |
| LHRBRKTL530  | Plate - Legacy - 30 Amp Adapter Plate - To fit a Legacy Connector into Main Eaton Mounting Bracket         |
| LHRBRKT60729 | Plate - Legacy - 50 Amp Adapter Plate - To fit a Legacy Connector into Main Eaton Mounting Bracket         |
| LHRBRKTB     | Plate - Blank - 30 Amp / 50 Amp - Blank Plate to plug a hole   |



## DOCK & LIFT KITS

## MARINA / DOCKSIDE PRODUCTS

### DESCRIPTION

This lift kit has all the components that you will need to keep your vessel safely charged while dockside.



SINGLE WEATHER BOX KIT



25 FT CORD WITH SMARTPLUG MALE & FEMALE PLUG ENDS



BOATHOUSE INLET STAINLESS STEEL



BOATHOUSE INLET WHITE

### 30 AMP / 125V DOCK & LIFT KITS WITH REVERSE POLARITY INDICATOR LIGHT

| PART NUMBER   | DESCRIPTION   | INLET                | CORD COLOR |
|---------------|---|----------------------|------------|
| BLFT30ASSPW0  | 30 Amp / 125V - 25 ft Cord With Male and Female SmartPlug Ends / Single Weather Box Kit / Boathouse Inlet | Non-Metallic / White | Orange     |
| BLFT30ASSYNT0 | 30 Amp / 125V - 25 ft Cord With Male and Female SmartPlug Ends / Single Weather Box Kit / Boathouse Inlet | Stainless Steel      | Orange     |



## 30 & 50 AMP MARINA SHOREPOWER CORDSETS

### DESCRIPTION

This cord allows you to connect to a SmartPlug pedestal and a SmartPlug boatside inlet. Fully tinned wires.



CM30253



CM50504

### 30 AMP & 50 AMP - SMARTPLUG MALE & SMARTPLUG FEMALE CORDSETS WITH REVERSE POLARITY INDICATOR LIGHT

| PART NUMBER | DESCRIPTION                                      | LENGTH | COLOR  | BOATSIDE         | DOCKSIDE         |
|-------------|--|--------|--------|------------------|------------------|
| CM30253     | 30 Amp SmartPlug Male & SmartPlug Female Cordset | 25ft   | Orange | 30 Amp SmartPlug | 30 Amp SmartPlug |
| CM30503     | 30 Amp SmartPlug Male & SmartPlug Female Cordset | 50ft   | Orange | 30 Amp SmartPlug | 30 Amp SmartPlug |
| CM50254     | 50 Amp SmartPlug Male & SmartPlug Female Cordset | 25ft   | Orange | 50 Amp SmartPlug | 50 Amp SmartPlug |
| CM50504     | 50 Amp SmartPlug Male & SmartPlug Female Cordset | 50ft   | Orange | 50 Amp SmartPlug | 50 Amp SmartPlug |

# 30 & 50 AMP SHORE POWER ADAPTERS

MARINA / DOCKSIDE PRODUCTS

MATES TO  
BOATSIDE  
INLET

MATES TO  
DOCKSIDE  
RECEPTACLE

MATES TO  
BOATSIDE  
INLET

MATES TO  
DOCKSIDE  
RECEPTACLE



30 Amp  
Male SmartPlug



C15043



15 Amp STD  
Wall Plug



30 Amp  
Male Twist-type



CM30043L530R



30 Amp  
Female  
SmartPlug



50 Amp  
Male SmartPlug



CM50043



30 Amp  
Female  
SmartPlug



30 Amp  
Male SmartPlug



C30043



30 Amp  
Female  
Twist-type

| PART NUMBER  | DESCRIPTION  | LENGTH | COLOR  | BOATSIDE                           | DOCKSIDE                                   |
|--------------|--|--------|--------|------------------------------------|--|
| C15043       | 30 Amp SmartPlug Female Connector to 15 Amp STD Male Wall Plug Connector | 4ft    | Orange | 30 Amp Female SmartPlug Connector  | 15 Amp Male Wall Plug Connector            |
| CM30043L530R | 30 Amp Female Twist-type Connector to 30 Amp SmartPlug Male Connector    | 4ft    | Orange | 30 Amp Twist-type Female Connector | 30 Amp Male SmartPlug Connector            |
| C30043       | 30 Amp SmartPlug Female Connector to 30 Amp Twist-type Male Connector    | 4ft    | Orange | 30 Amp Female SmartPlug Connector  | 30 Amp Twist-type Male SmartPlug Connector |
| CM50043      | 50 Amp SmartPlug Female Connector to 30 Amp SmartPlug Male Connector     | 4ft    | Orange | 50 Amp Female SmartPlug Connector  | 30 Amp Male SmartPlug Connector            |





## 30 & 50 AMP SHORE POWER ADAPTERS

## MARINA / DOCKSIDE PRODUCTS

MATES TO  
BOATSIDE  
INLET

MATES TO  
DOCKSIDE  
RECEPTACLE

MATES TO  
BOATSIDE  
INLET

MATES TO  
DOCKSIDE  
RECEPTACLE

  
50 Amp  
Male SmartPlug



C50044L515P

  
15 Amp STD  
Wall Plug


  
50 Amp  
Male SmartPlug



C50044



50 Amp  
Female  
Twist-type


  
50 Amp  
Male SmartPlug



C50044L530P



30 Amp  
Female  
Twist-type

  
50 Amp  
Male Twist-type



CM5004460729R



50 Amp  
Female  
SmartPlug

| PART NUMBER   | DESCRIPTION  | LENGTH | COLOR  | BOATSIDE                          | DOCKSIDE                         |
|---------------|--|--------|--------|-----------------------------------|----------------------------------|
| C50044L515P   | 50 Amp SmartPlug Female Connector to 15 Amp STD Male Wall Plug Connector | 4ft    | Orange | 50 Amp Female SmartPlug Connector | 15 Amp Male Wall Plug Connector  |
| C50044L530P   | 50 Amp SmartPlug Female Connector to 30 Amp Male Twist-type Connector    | 4ft    | Orange | 50 Amp Female SmartPlug Connector | 30 Amp Male Twist-type Connector |
| C50044        | 50 Amp SmartPlug Female Connector to 50 Amp Male Twist-type Connector    | 4ft    | Orange | 50 Amp Female SmartPlug Connector | 50 Amp Male Twist-type Connector |
| CM5004460729R | 50 Amp Female Twist-type Connector to 50 Amp SmartPlug Male Connector    | 4ft    | Black  | 50 Amp Twist-type Connector       | 50 Amp Male SmartPlug Connector  |

**SAFE**

**SIMPLE**

**SECURE**



Made in the USA



# SMARTPLUG®

Innovations in Power Delivery

*Marine*  
PRODUCT CATALOG **2022**

2500 Westlake Avenue North, Suite G  
Seattle, WA 98109-2262



[info@smartplug.com](mailto:info@smartplug.com)

[www.SmartPlug.com](http://www.SmartPlug.com)

206.285.2990

122221B